



Sometimes a helping hand is necessary for leading life at your own rhythm. Melody Living's variety of assisted living services, floor plans and 24-hr nursing support offer community members the right level of assistance needed to feel secure, safe and as independent as desired.

FEATURES & TECHNOLOGY

- **Electronic key locks**
Logs visits to the community member's home
- **Maximized independence with care**
Available at the touch of a button
- **Proactive health monitoring**
Discretely delivers resident health status
- **Tailored concierge care**
Coordinated with primary care physician
- **24-hr nursing support**

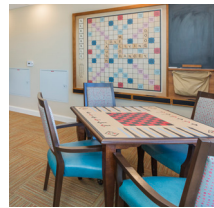
Community Life

Melody Living's indoor venues inspire a Life in Harmony for community members of any lifestyle. Treat yourself to a delicious chef-driven meal at the Pikes Peak Dining Room, kick back to a fun night at the movies in the Pines Theater, relax in one of our many lounges or gather together in the Community Life Room.

Let your creative side shine in the Inspirations Art Studio. Get some fresh air and step outside into the Mountain View Garden or soak up some sun in one of Melody Living's warm Sun Rooms or a relaxing garden patio.

Lifestyle Comforts

This supportive community and its trained staff provide options to enjoy onsite wellness amenities such as the Prelude Salon, Momentum Fitness Center, Wellness Center, and Celebration Bistro.



Floor Plans

The luxurious studio, one and two bedroom apartments offer spacious, open floor plans with upgraded finishes.

- **Granite countertops & kitchenettes**
- **Mountain, garden, & valley views**
- **Tile flooring & ample closet space**
- **Private bath with shower**



Monthly Fees Include

- All utilities included except telephone
- Wireless internet
- Basic cable
- Three chef-planned meals daily
Always available snacks
- Low maintenance living
We maintain everything but personal items
- Scheduled transportation
- Concierge available 7 days a week
- Life enrichment programs
- Fitness & wellness classes
- Emergency call system
- Laundry & housekeeping

Community Features

- Landscaped, secure garden patio, & walking paths
- A playscape & sandbox
For your young visitors to enjoy
- Art studio
- Community Life room
- Movie theater / Chapel
- Fitness center
- Beauty salon / Barber shop
- Massage therapy
- Sprouts KidZone for young visitors
- Wellness center
- Sunrooms
- Billiard room



Apartment Features

- Companion suites
Designed to provide individual privacy
- Spacious studios
- 1 & 2 bedroom apartments
- Kitchenettes with granite countertops & a refrigerator
- Bathrooms feature tile & granite
Ample grab bars & accessible shower
- Electronic key locks
For convenient ease of access and added security
- Pet-friendly apartments



*R*adiating with rhythm and energy, Melody Living's memory support neighborhood provides a secure environment that ensures safety while enhancing the lives of those living with dementia and memory loss as they engage in growth and exploration at their tempo.

FEATURES & TECHNOLOGY

- **Electronic key locks**
Logs visits to the community member's home
- **Maximized independence with care**
Available at the touch of a button
- **Proactive health monitoring**
Discretely delivers resident health status
- **Tailored concierge care**
Coordinated with primary care physician
- **24-hr nursing support**

Supportive Environment

Melody Living's highly trained memory support team makes it their priority to provide a secure and welcoming atmosphere that not only encourages growth and exploration but embraces each person's abilities rather than their perceived limitations.

Community Life

Enjoy spaces like the Palisade Dining Room and the numerous niches that focus on enhancing purposeful living to support our community members as they live a Life in Harmony.

Lifestyle Comforts

A secure and landscaped garden is easily accessible, serving as the heart of the neighborhood while naturally lit sun rooms and the Peterson Lounge offer comfortable indoor spaces to relax and socialize.



Floor Plans

Luxurious studio, one bedroom and companion suite apartments offer spacious open floor plans to safely and comfortably meet the needs of each individual.

- **Granite countertops & kitchenettes**
- **Mountain, garden, & valley views**
- **Tile flooring & ample closet space**
- **Private bath with roll-in shower**



Monthly Fees Include

- All utilities included except telephone
- Wireless internet
- Basic cable
- Three chef-planned meals daily
Always available snacks
- Low maintenance living
We maintain everything but personal items
- Scheduled transportation
- Concierge available 7 days a week
- Life enrichment programs
- Fitness & wellness classes
- Emergency call system
- Laundry & housekeeping

Community Features

- Landscaped, secure garden patio, & walking paths
- A playscape & sandbox
For your young visitors to enjoy
- Art studio
- Community Life room
- Movie theater / Chapel
- Fitness center
- Beauty salon / Barber shop
- Massage therapy
- Sprouts KidZone for young visitors
- Wellness center
- Sunrooms
- Billiard room



Apartment Features

- Companion suites
Designed to provide individual privacy
- Spacious studios
- 1 & 2 bedroom apartments
- Kitchenettes with granite countertops & a refrigerator
- Bathrooms feature tile & granite
Ample grab bars & accessible shower
- Electronic key locks
For convenient ease of access and added security
- Pet-friendly apartments